

**AUTHOR**

Philip Henman

**VERSION NUMBER/DATE**

1.0 / Jan 2018

**REVIEW DATE**

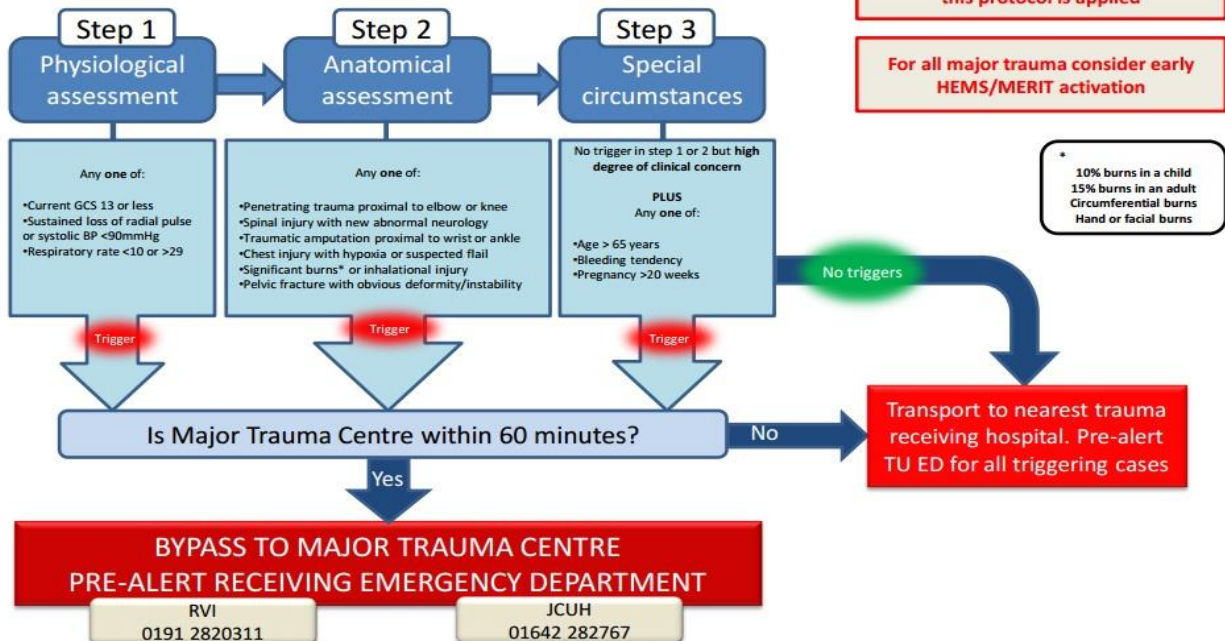
31/01/2020

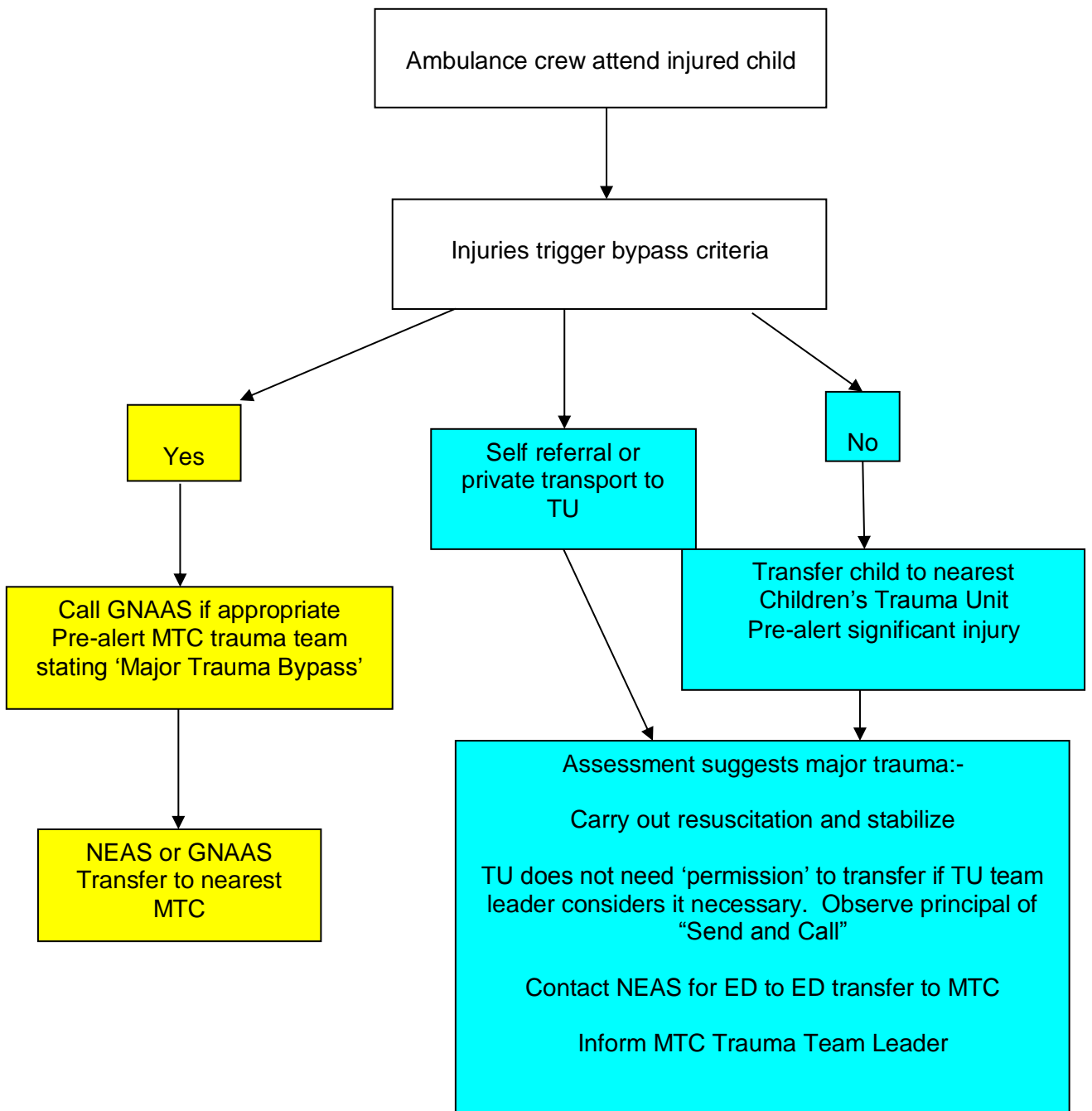
**RELATED INFORMATION**

**Major Trauma Bypass Protocol**

This protocol should be used if major trauma is likely to have occurred based on a significant mechanism of injury. Examples may include:

- |  |                             |
|--|-----------------------------|
| High speed road traffic collisions       | Fall from 2 storeys or more |
| Motorcycle road traffic collisions       | Crush injuries              |
| Pedestrian or cyclist versus vehicle     | Assault with a weapon       |
| Death of an occupant in the same vehicle | Prolonged entrapments       |
| Ejection from a vehicle                  | Blast injuries              |





**Important Notes**

ED to ED transfers to be considered Time Critical unless otherwise agreed between Trauma Team Leaders  
Do **not** call NECTAR for ED to ED transfers. NECTAR is specifically for arranged transfer to PICU

## **Transfer Guidelines**

### **TU to MTC Transfer**

In the event of a child with major injuries presenting to a Trauma Unit

**Secure Airway**

**Stop major haemorrhage**

**Arrange urgent transfer to MTC. This is the responsibility of the TU.**

**Telephone MTC**

**Basic Principle - 'Send and call'**

### **NECTAR**

NECTAR is a transport and retrieval service for children in the North East and Cumbria who require critical care. It is primarily for transporting children to and between PICUs. While their role is not to transport children between Emergency Departments, they are available as a resource for advice calls regarding transport of injured children.